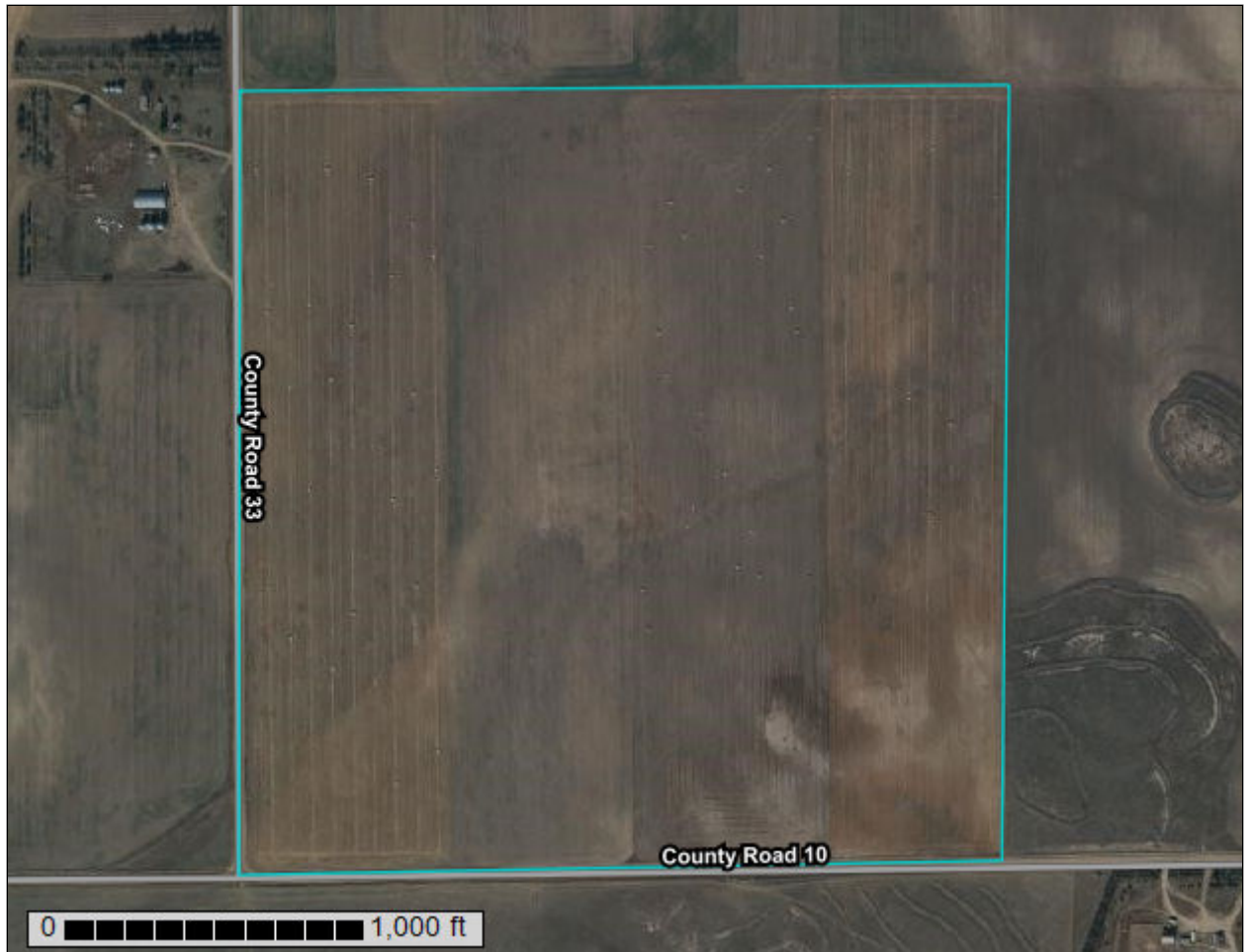


Custom Soil Resource Report for **Kimball County, Nebraska**

Kimball County Dryland Farm Soil Map



Preface

Soil surveys contain information that affects land use planning in survey areas. They highlight soil limitations that affect various land uses and provide information about the properties of the soils in the survey areas. Soil surveys are designed for many different users, including farmers, ranchers, foresters, agronomists, urban planners, community officials, engineers, developers, builders, and home buyers. Also, conservationists, teachers, students, and specialists in recreation, waste disposal, and pollution control can use the surveys to help them understand, protect, or enhance the environment.

Various land use regulations of Federal, State, and local governments may impose special restrictions on land use or land treatment. Soil surveys identify soil properties that are used in making various land use or land treatment decisions. The information is intended to help the land users identify and reduce the effects of soil limitations on various land uses. The landowner or user is responsible for identifying and complying with existing laws and regulations.

Although soil survey information can be used for general farm, local, and wider area planning, onsite investigation is needed to supplement this information in some cases. Examples include soil quality assessments (<http://www.nrcs.usda.gov/wps/portal/nrcs/main/soils/health/>) and certain conservation and engineering applications. For more detailed information, contact your local USDA Service Center (<https://offices.sc.egov.usda.gov/locator/app?agency=nrcs>) or your NRCS State Soil Scientist (http://www.nrcs.usda.gov/wps/portal/nrcs/detail/soils/contactus/?cid=nrcs142p2_053951).

Great differences in soil properties can occur within short distances. Some soils are seasonally wet or subject to flooding. Some are too unstable to be used as a foundation for buildings or roads. Clayey or wet soils are poorly suited to use as septic tank absorption fields. A high water table makes a soil poorly suited to basements or underground installations.

The National Cooperative Soil Survey is a joint effort of the United States Department of Agriculture and other Federal agencies, State agencies including the Agricultural Experiment Stations, and local agencies. The Natural Resources Conservation Service (NRCS) has leadership for the Federal part of the National Cooperative Soil Survey.

Information about soils is updated periodically. Updated information is available through the NRCS Web Soil Survey, the site for official soil survey information.

The U.S. Department of Agriculture (USDA) prohibits discrimination in all its programs and activities on the basis of race, color, national origin, age, disability, and where applicable, sex, marital status, familial status, parental status, religion, sexual orientation, genetic information, political beliefs, reprisal, or because all or a part of an individual's income is derived from any public assistance program. (Not all prohibited bases apply to all programs.) Persons with disabilities who require

alternative means for communication of program information (Braille, large print, audiotape, etc.) should contact USDA's TARGET Center at (202) 720-2600 (voice and TDD). To file a complaint of discrimination, write to USDA, Director, Office of Civil Rights, 1400 Independence Avenue, S.W., Washington, D.C. 20250-9410 or call (800) 795-3272 (voice) or (202) 720-6382 (TDD). USDA is an equal opportunity provider and employer.

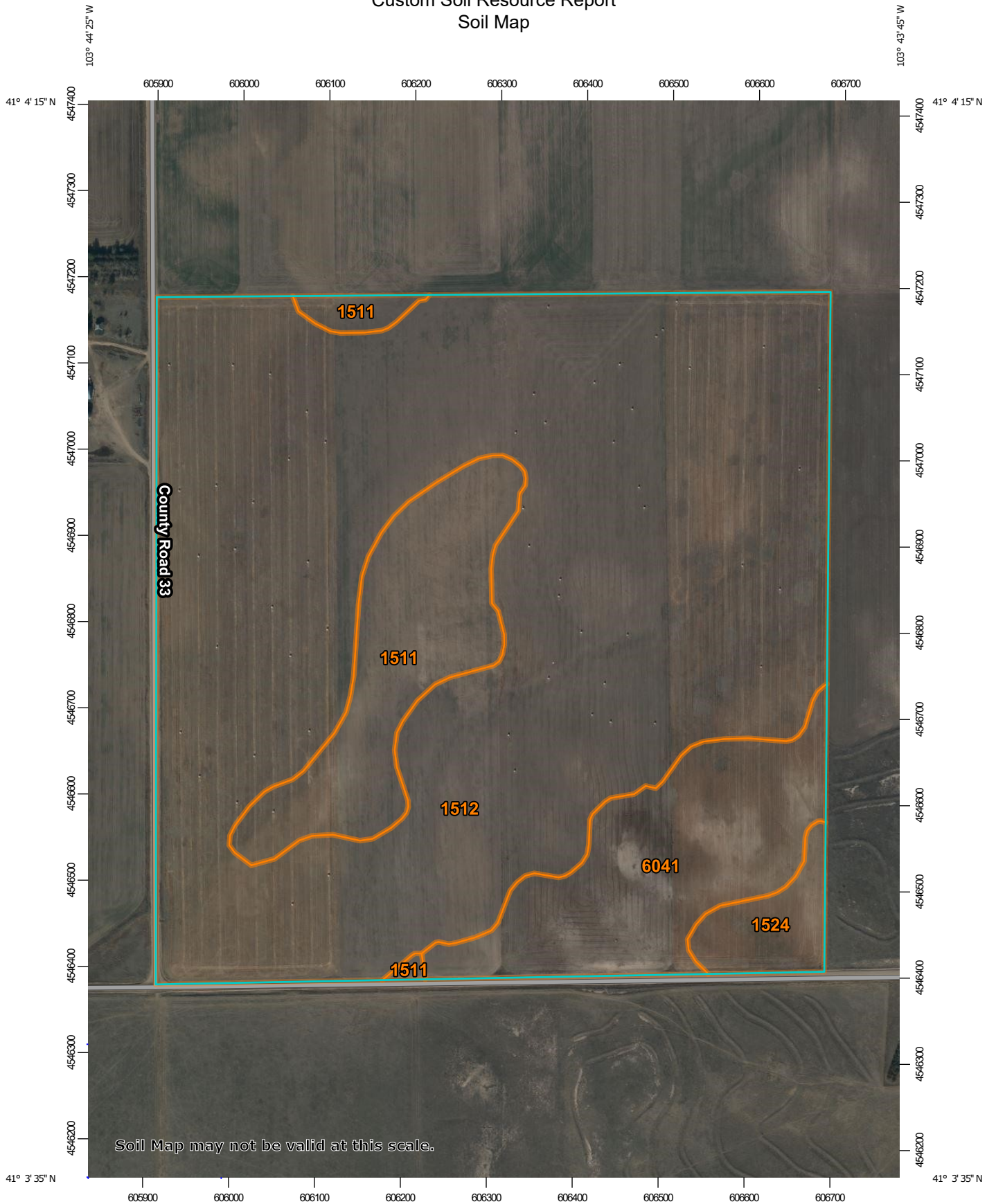
Contents

Preface	2
Soil Map	5
Soil Map.....	6
Legend.....	7
Map Unit Legend.....	8
Map Unit Descriptions.....	8
Kimball County, Nebraska.....	10
1511—Altvan-Satanta fine sandy loams, 1 to 3 percent slopes.....	10
1512—Altvan-Satanta loams, 0 to 1 percent slopes.....	12
1524—Brownson-Rosebud-Canyon loams, 0 to 3 percent slopes.....	14
6041—Tassel-Blanche sandy loams, 3 to 9 percent slopes.....	17

Soil Map

The soil map section includes the soil map for the defined area of interest, a list of soil map units on the map and extent of each map unit, and cartographic symbols displayed on the map. Also presented are various metadata about data used to produce the map, and a description of each soil map unit.

Custom Soil Resource Report Soil Map



Map Scale: 1:6,090 if printed on A portrait (8.5" x 11") sheet.


0 50 100 200 300 Meters

0 250 500 1000 1500 Feet

Map projection: Web Mercator Corner coordinates: WGS84 Edge tics: UTM Zone 13N WGS84


MAP LEGEND

Area of Interest (AOI)

 Area of Interest (AOI)

Soils







 Soil Map Unit Polygons

 Soil Map Unit Lines


 Soil Map Unit Points

Special Point Features






-  Blowout
-  Borrow Pit
-  Clay Spot
-  Closed Depression
-  Gravel Pit
-  Gravelly Spot
-  Landfill
-  Lava Flow
-  Marsh or swamp
-  Mine or Quarry
-  Miscellaneous Water
-  Perennial Water
-  Rock Outcrop
-  Saline Spot
-  Sandy Spot
-  Severely Eroded Spot
-  Sinkhole
-  Slide or Slip
-  Sodic Spot

-  Spoil Area
-  Stony Spot
-  Very Stony Spot
-  Wet Spot
-  Other
-  Special Line Features


Water Features

 Streams and Canals

Transportation

-  Rails
-  Interstate Highways
-  US Routes
-  Major Roads
-  Local Roads

Background

 Aerial Photography

MAP INFORMATION

The soil surveys that comprise your AOI were mapped at 1:24,000.

Warning: Soil Map may not be valid at this scale.

Enlargement of maps beyond the scale of mapping can cause misunderstanding of the detail of mapping and accuracy of soil line placement. The maps do not show the small areas of contrasting soils that could have been shown at a more detailed scale.

Please rely on the bar scale on each map sheet for map measurements.

Source of Map: Natural Resources Conservation Service
 Web Soil Survey URL:
 Coordinate System: Web Mercator (EPSG:3857)

Maps from the Web Soil Survey are based on the Web Mercator projection, which preserves direction and shape but distorts distance and area. A projection that preserves area, such as the Albers equal-area conic projection, should be used if more accurate calculations of distance or area are required.

This product is generated from the USDA-NRCS certified data as of the version date(s) listed below.

Soil Survey Area: Kimball County, Nebraska
 Survey Area Data: Version 24, Aug 28, 2024

Soil map units are labeled (as space allows) for map scales 1:50,000 or larger.

Date(s) aerial images were photographed: Oct 17, 2021—Nov 21, 2021

The orthophoto or other base map on which the soil lines were compiled and digitized probably differs from the background imagery displayed on these maps. As a result, some minor shifting of map unit boundaries may be evident.

Map Unit Legend

Map Unit Symbol	Map Unit Name	Acres in AOI	Percent of AOI
1511	Altvan-Satanta fine sandy loams, 1 to 3 percent slopes	16.2	10.6%
1512	Altvan-Satanta loams, 0 to 1 percent slopes	116.2	75.6%
1524	Brownson-Rosebud-Canyon loams, 0 to 3 percent slopes	3.8	2.5%
6041	Tassel-Blanche sandy loams, 3 to 9 percent slopes	17.4	11.4%
Totals for Area of Interest		153.7	100.0%

Map Unit Descriptions

The map units delineated on the detailed soil maps in a soil survey represent the soils or miscellaneous areas in the survey area. The map unit descriptions, along with the maps, can be used to determine the composition and properties of a unit.

A map unit delineation on a soil map represents an area dominated by one or more major kinds of soil or miscellaneous areas. A map unit is identified and named according to the taxonomic classification of the dominant soils. Within a taxonomic class there are precisely defined limits for the properties of the soils. On the landscape, however, the soils are natural phenomena, and they have the characteristic variability of all natural phenomena. Thus, the range of some observed properties may extend beyond the limits defined for a taxonomic class. Areas of soils of a single taxonomic class rarely, if ever, can be mapped without including areas of other taxonomic classes. Consequently, every map unit is made up of the soils or miscellaneous areas for which it is named and some minor components that belong to taxonomic classes other than those of the major soils.

Most minor soils have properties similar to those of the dominant soil or soils in the map unit, and thus they do not affect use and management. These are called noncontrasting, or similar, components. They may or may not be mentioned in a particular map unit description. Other minor components, however, have properties and behavioral characteristics divergent enough to affect use or to require different management. These are called contrasting, or dissimilar, components. They generally are in small areas and could not be mapped separately because of the scale used. Some small areas of strongly contrasting soils or miscellaneous areas are identified by a special symbol on the maps. If included in the database for a given area, the contrasting minor components are identified in the map unit descriptions along with some characteristics of each. A few areas of minor components may not have been observed, and consequently they are not mentioned in the descriptions, especially where the pattern was so complex that it was impractical to make enough observations to identify all the soils and miscellaneous areas on the landscape.

Custom Soil Resource Report

The presence of minor components in a map unit in no way diminishes the usefulness or accuracy of the data. The objective of mapping is not to delineate pure taxonomic classes but rather to separate the landscape into landforms or landform segments that have similar use and management requirements. The delineation of such segments on the map provides sufficient information for the development of resource plans. If intensive use of small areas is planned, however, onsite investigation is needed to define and locate the soils and miscellaneous areas.

An identifying symbol precedes the map unit name in the map unit descriptions. Each description includes general facts about the unit and gives important soil properties and qualities.

Soils that have profiles that are almost alike make up a *soil series*. Except for differences in texture of the surface layer, all the soils of a series have major horizons that are similar in composition, thickness, and arrangement.

Soils of one series can differ in texture of the surface layer, slope, stoniness, salinity, degree of erosion, and other characteristics that affect their use. On the basis of such differences, a soil series is divided into *soil phases*. Most of the areas shown on the detailed soil maps are phases of soil series. The name of a soil phase commonly indicates a feature that affects use or management. For example, Alpha silt loam, 0 to 2 percent slopes, is a phase of the Alpha series.

Some map units are made up of two or more major soils or miscellaneous areas. These map units are complexes, associations, or undifferentiated groups.

A *complex* consists of two or more soils or miscellaneous areas in such an intricate pattern or in such small areas that they cannot be shown separately on the maps. The pattern and proportion of the soils or miscellaneous areas are somewhat similar in all areas. Alpha-Beta complex, 0 to 6 percent slopes, is an example.

An *association* is made up of two or more geographically associated soils or miscellaneous areas that are shown as one unit on the maps. Because of present or anticipated uses of the map units in the survey area, it was not considered practical or necessary to map the soils or miscellaneous areas separately. The pattern and relative proportion of the soils or miscellaneous areas are somewhat similar. Alpha-Beta association, 0 to 2 percent slopes, is an example.

An *undifferentiated group* is made up of two or more soils or miscellaneous areas that could be mapped individually but are mapped as one unit because similar interpretations can be made for use and management. The pattern and proportion of the soils or miscellaneous areas in a mapped area are not uniform. An area can be made up of only one of the major soils or miscellaneous areas, or it can be made up of all of them. Alpha and Beta soils, 0 to 2 percent slopes, is an example.

Some surveys include *miscellaneous areas*. Such areas have little or no soil material and support little or no vegetation. Rock outcrop is an example.

Kimball County, Nebraska

1511—Altvan-Satanta fine sandy loams, 1 to 3 percent slopes

Map Unit Setting

National map unit symbol: 1tt6v
Elevation: 4,500 to 5,500 feet
Mean annual precipitation: 16 to 18 inches
Mean annual air temperature: 46 to 50 degrees F
Frost-free period: 120 to 140 days
Farmland classification: Prime farmland if irrigated

Map Unit Composition

Altvan and similar soils: 55 percent
Satanta and similar soils: 30 percent
Minor components: 15 percent
Estimates are based on observations, descriptions, and transects of the mapunit.

Description of Altvan

Setting

Landform: Plains
Down-slope shape: Linear
Across-slope shape: Linear
Parent material: Loess over sandy and gravelly alluvium

Typical profile

Ap - 0 to 5 inches: fine sandy loam
Bt1 - 5 to 10 inches: clay loam
Bt2 - 10 to 17 inches: clay loam
BCK - 17 to 24 inches: loam
C1 - 24 to 30 inches: loam
2C2 - 30 to 80 inches: coarse sand

Properties and qualities

Slope: 1 to 3 percent
Depth to restrictive feature: More than 80 inches
Drainage class: Well drained
Runoff class: Low
Capacity of the most limiting layer to transmit water (Ksat): Moderately high (0.20 to 0.60 in/hr)
Depth to water table: More than 80 inches
Frequency of flooding: None
Frequency of ponding: None
Calcium carbonate, maximum content: 10 percent
Available water supply, 0 to 60 inches: Moderate (about 6.4 inches)

Interpretive groups

Land capability classification (irrigated): 3s
Land capability classification (nonirrigated): 3e
Hydrologic Soil Group: C
Ecological site: R067AY122WY - Loamy (Ly)
Forage suitability group: Loam (G067AY100NE)
Other vegetative classification: Loam (G067AY100NE)
Hydric soil rating: No

Description of Satanta

Setting

Landform: Plains
Down-slope shape: Linear
Across-slope shape: Linear
Parent material: Loess

Typical profile

Ap - 0 to 9 inches: fine sandy loam
A1 - 9 to 14 inches: fine sandy loam
Bt - 14 to 26 inches: clay loam
BCK - 26 to 31 inches: loam
C1 - 31 to 55 inches: very fine sandy loam
2C2 - 55 to 80 inches: sand

Properties and qualities

Slope: 1 to 3 percent
Depth to restrictive feature: More than 80 inches
Drainage class: Well drained
Runoff class: Low
Capacity of the most limiting layer to transmit water (Ksat): Moderately high (0.20 to 0.60 in/hr)
Depth to water table: More than 80 inches
Frequency of flooding: None
Frequency of ponding: None
Calcium carbonate, maximum content: 10 percent
Available water supply, 0 to 60 inches: High (about 10.4 inches)

Interpretive groups

Land capability classification (irrigated): 2e
Land capability classification (nonirrigated): 3e
Hydrologic Soil Group: C
Ecological site: R067AY122WY - Loamy (Ly)
Forage suitability group: Loam (G067AY100NE)
Other vegetative classification: Loam (G067AY100NE)
Hydric soil rating: No

Minor Components

Bayard

Percent of map unit: 5 percent
Landform: Stream terraces
Landform position (three-dimensional): Tread
Down-slope shape: Linear
Across-slope shape: Linear
Ecological site: R067AY124WY - Loamy Lowland (LyL)
Other vegetative classification: Not Suited (G067AY000NE)
Hydric soil rating: No

Eckley

Percent of map unit: 5 percent
Landform: Plains
Down-slope shape: Linear
Across-slope shape: Linear
Ecological site: R067AY112WY - Gravelly (Gr)

Custom Soil Resource Report

Other vegetative classification: Not Suited (G067AY000NE)
Hydric soil rating: No

Albinas, rarely flooded

Percent of map unit: 5 percent
Landform: Stream terraces
Landform position (three-dimensional): Tread
Down-slope shape: Linear
Across-slope shape: Linear
Ecological site: R067AY126WY - Loamy Overflow (LyO)
Other vegetative classification: Loam (G067AY100NE)
Hydric soil rating: No

1512—Altvan-Satanta loams, 0 to 1 percent slopes

Map Unit Setting

National map unit symbol: 1tt6x
Elevation: 4,500 to 5,500 feet
Mean annual precipitation: 16 to 18 inches
Mean annual air temperature: 46 to 50 degrees F
Frost-free period: 120 to 140 days
Farmland classification: Prime farmland if irrigated

Map Unit Composition

Altvan and similar soils: 60 percent
Satanta and similar soils: 30 percent
Minor components: 10 percent
Estimates are based on observations, descriptions, and transects of the mapunit.

Description of Altvan

Setting

Landform: Plains
Down-slope shape: Linear
Across-slope shape: Linear
Parent material: Loess over sandy and gravelly alluvium

Typical profile

Ap - 0 to 5 inches: loam
Bt1 - 5 to 10 inches: clay loam
Bt2 - 10 to 17 inches: clay loam
BCK - 17 to 24 inches: loam
C1 - 24 to 30 inches: loam
2C2 - 30 to 80 inches: coarse sand

Properties and qualities

Slope: 0 to 1 percent
Depth to restrictive feature: More than 80 inches
Drainage class: Well drained
Runoff class: Negligible

Custom Soil Resource Report

Capacity of the most limiting layer to transmit water (Ksat): Moderately high (0.20 to 0.60 in/hr)

Depth to water table: More than 80 inches

Frequency of flooding: None

Frequency of ponding: None

Calcium carbonate, maximum content: 10 percent

Available water supply, 0 to 60 inches: Moderate (about 6.4 inches)

Interpretive groups

Land capability classification (irrigated): 2s

Land capability classification (nonirrigated): 3c

Hydrologic Soil Group: C

Ecological site: R067AY122WY - Loamy (Ly)

Forage suitability group: Loam (G067AY100NE)

Other vegetative classification: Loam (G067AY100NE)

Hydric soil rating: No

Description of Satanta

Setting

Landform: Plains

Down-slope shape: Linear

Across-slope shape: Linear

Parent material: Loess

Typical profile

Ap - 0 to 9 inches: loam

A1 - 9 to 14 inches: loam

Bt - 14 to 26 inches: clay loam

Bck - 26 to 31 inches: loam

C1 - 31 to 55 inches: very fine sandy loam

2C2 - 55 to 80 inches: sand

Properties and qualities

Slope: 0 to 1 percent

Depth to restrictive feature: More than 80 inches

Drainage class: Well drained

Runoff class: Negligible

Capacity of the most limiting layer to transmit water (Ksat): Moderately high (0.20 to 0.60 in/hr)

Depth to water table: More than 80 inches

Frequency of flooding: None

Frequency of ponding: None

Calcium carbonate, maximum content: 10 percent

Available water supply, 0 to 60 inches: High (about 10.4 inches)

Interpretive groups

Land capability classification (irrigated): 1

Land capability classification (nonirrigated): 3c

Hydrologic Soil Group: C

Ecological site: R067AY122WY - Loamy (Ly)

Forage suitability group: Loam (G067AY100NE)

Other vegetative classification: Loam (G067AY100NE)

Hydric soil rating: No

Minor Components

Bayard

Percent of map unit: 5 percent
Landform: Stream terraces
Landform position (three-dimensional): Tread
Down-slope shape: Linear
Across-slope shape: Linear
Ecological site: R067AY124WY - Loamy Lowland (LyL)
Other vegetative classification: Not Suited (G067AY000NE)
Hydric soil rating: No

Albinas, rarely flooded

Percent of map unit: 5 percent
Landform: Stream terraces
Landform position (three-dimensional): Tread
Down-slope shape: Linear
Across-slope shape: Linear
Ecological site: R067AY126WY - Loamy Overflow (LyO)
Other vegetative classification: Loam (G067AY100NE)
Hydric soil rating: No

1524—Brownson-Rosebud-Canyon loams, 0 to 3 percent slopes

Map Unit Setting

National map unit symbol: 1t71
Elevation: 4,500 to 5,500 feet
Mean annual precipitation: 16 to 18 inches
Mean annual air temperature: 46 to 50 degrees F
Frost-free period: 120 to 140 days
Farmland classification: Not prime farmland

Map Unit Composition

Brownson and similar soils: 40 percent
Rosebud and similar soils: 30 percent
Canyon and similar soils: 20 percent
Minor components: 10 percent
Estimates are based on observations, descriptions, and transects of the mapunit.

Description of Brownson

Setting

Landform: Plains
Down-slope shape: Linear
Across-slope shape: Linear
Parent material: Loess over weakly cemented fine grained sandstone

Typical profile

A - 0 to 5 inches: loam

Custom Soil Resource Report

Bt - 5 to 13 inches: clay loam
Cr - 13 to 60 inches: weathered bedrock

Properties and qualities

Slope: 0 to 3 percent
Depth to restrictive feature: 6 to 20 inches to paralithic bedrock
Drainage class: Well drained
Runoff class: Low
Capacity of the most limiting layer to transmit water (Ksat): Moderately high (0.20 to 0.60 in/hr)
Depth to water table: More than 80 inches
Frequency of flooding: None
Frequency of ponding: None
Available water supply, 0 to 60 inches: Very low (about 2.4 inches)

Interpretive groups

Land capability classification (irrigated): None specified
Land capability classification (nonirrigated): 6s
Hydrologic Soil Group: D
Ecological site: R067AY162WY - Shallow (Sw)
Forage suitability group: Shallow (G072XA003KS)
Other vegetative classification: Shallow (G072XA003KS)
Hydric soil rating: No

Description of Rosebud

Setting

Landform: Plains
Down-slope shape: Linear
Across-slope shape: Linear
Parent material: Loess over weakly cemented fine grained sandstone

Typical profile

A - 0 to 6 inches: loam
Bt - 6 to 17 inches: clay loam
B_{Ck} - 17 to 23 inches: loam
Cr - 23 to 60 inches: weathered bedrock

Properties and qualities

Slope: 0 to 3 percent
Depth to restrictive feature: 20 to 40 inches to paralithic bedrock
Drainage class: Well drained
Runoff class: Low
Capacity of the most limiting layer to transmit water (Ksat): Moderately high (0.20 to 0.60 in/hr)
Depth to water table: More than 80 inches
Frequency of flooding: None
Frequency of ponding: None
Calcium carbonate, maximum content: 10 percent
Available water supply, 0 to 60 inches: Low (about 4.2 inches)

Interpretive groups

Land capability classification (irrigated): 3e
Land capability classification (nonirrigated): 3e
Hydrologic Soil Group: C
Ecological site: R067AY122WY - Loamy (Ly)
Forage suitability group: Loam (G072XA100KS)

Custom Soil Resource Report

Other vegetative classification: Loam (G072XA100KS)
Hydric soil rating: No

Description of Canyon

Setting

Landform: Plains
Down-slope shape: Linear
Across-slope shape: Linear
Parent material: Calcareous loamy residuum weathered from calcareous sandstone

Typical profile

Ap - 0 to 6 inches: loam
C - 6 to 10 inches: very fine sandy loam
Cr - 10 to 60 inches: weathered bedrock

Properties and qualities

Slope: 0 to 3 percent
Depth to restrictive feature: 6 to 20 inches to paralithic bedrock
Drainage class: Well drained
Runoff class: Low
Capacity of the most limiting layer to transmit water (Ksat): Moderately high to high (0.60 to 2.00 in/hr)
Depth to water table: More than 80 inches
Frequency of flooding: None
Frequency of ponding: None
Calcium carbonate, maximum content: 10 percent
Maximum salinity: Nonsaline to very slightly saline (0.0 to 2.0 mmhos/cm)
Available water supply, 0 to 60 inches: Very low (about 1.9 inches)

Interpretive groups

Land capability classification (irrigated): None specified
Land capability classification (nonirrigated): 6s
Hydrologic Soil Group: D
Ecological site: R067AY162WY - Shallow (Sw)
Forage suitability group: Shallow (G072XA003KS)
Other vegetative classification: Shallow (G072XA003KS)
Hydric soil rating: No

Minor Components

Blanche

Percent of map unit: 5 percent
Landform: Plains
Down-slope shape: Linear
Across-slope shape: Linear
Ecological site: R067AY150WY - Sandy (Sy)
Hydric soil rating: No

Tassel

Percent of map unit: 3 percent
Landform: Plains
Down-slope shape: Linear
Across-slope shape: Linear
Ecological site: R067AY162WY - Shallow (Sw)
Other vegetative classification: Shallow (G072XA003KS)

Custom Soil Resource Report

Hydric soil rating: No

Hemingford

Percent of map unit: 2 percent

Landform: Plains

Down-slope shape: Linear

Across-slope shape: Linear

Ecological site: R067AY122WY - Loamy (Ly)

Hydric soil rating: No

6041—Tassel-Blanche sandy loams, 3 to 9 percent slopes

Map Unit Setting

National map unit symbol: 1tt7m

Elevation: 4,500 to 5,500 feet

Mean annual precipitation: 16 to 18 inches

Mean annual air temperature: 46 to 50 degrees F

Frost-free period: 120 to 140 days

Farmland classification: Not prime farmland

Map Unit Composition

Tassel and similar soils: 50 percent

Blanche and similar soils: 30 percent

Minor components: 20 percent

Estimates are based on observations, descriptions, and transects of the mapunit.

Description of Tassel

Setting

Landform: Hillslopes

Down-slope shape: Convex, concave

Across-slope shape: Linear

Parent material: Residuum weathered from calcareous sandstone

Typical profile

Ap - 0 to 6 inches: sandy loam

Cr - 6 to 60 inches: weathered bedrock

Properties and qualities

Slope: 3 to 9 percent

Depth to restrictive feature: 6 to 20 inches to paralithic bedrock

Drainage class: Well drained

Runoff class: Low

Capacity of the most limiting layer to transmit water (Ksat): Moderately high to high
(1.42 to 6.00 in/hr)

Depth to water table: More than 80 inches

Frequency of flooding: None

Frequency of ponding: None

Custom Soil Resource Report

Calcium carbonate, maximum content: 10 percent
Available water supply, 0 to 60 inches: Very low (about 1.0 inches)

Interpretive groups

Land capability classification (irrigated): None specified
Land capability classification (nonirrigated): 6s
Hydrologic Soil Group: D
Ecological site: R067AY162WY - Shallow (Sw)
Forage suitability group: Very Shallow to Gravel (G067AY003NE)
Other vegetative classification: Very Shallow to Gravel (G067AY003NE)
Hydric soil rating: No

Description of Blanche

Setting

Landform: Hillslopes
Down-slope shape: Convex, concave
Across-slope shape: Linear
Parent material: Residuum weathered from calcareous sandstone

Typical profile

Ap - 0 to 5 inches: sandy loam
Bw - 5 to 17 inches: sandy loam
B_{Ck} - 17 to 22 inches: sandy loam
C - 22 to 27 inches: sandy loam
Cr - 27 to 60 inches: weathered bedrock

Properties and qualities

Slope: 3 to 9 percent
Depth to restrictive feature: 20 to 40 inches to paralithic bedrock
Drainage class: Well drained
Runoff class: Low
Capacity of the most limiting layer to transmit water (K_{sat}): Moderately high to high
(1.42 to 6.00 in/hr)
Depth to water table: More than 80 inches
Frequency of flooding: None
Frequency of ponding: None
Calcium carbonate, maximum content: 10 percent
Available water supply, 0 to 60 inches: Low (about 4.1 inches)

Interpretive groups

Land capability classification (irrigated): 4e
Land capability classification (nonirrigated): 6e
Hydrologic Soil Group: B
Ecological site: R067AY150WY - Sandy (Sy)
Forage suitability group: Droughty Loam (G067AY120NE)
Other vegetative classification: Droughty Loam (G067AY120NE)
Hydric soil rating: No

Minor Components

Treon

Percent of map unit: 5 percent
Landform: Hillslopes
Down-slope shape: Convex, concave
Across-slope shape: Linear
Ecological site: R067AY162WY - Shallow (Sw)

Custom Soil Resource Report

Other vegetative classification: Not Suited (G067AY000NE)
Hydric soil rating: No

Jayem

Percent of map unit: 5 percent
Landform: Hillslopes
Down-slope shape: Convex, concave
Across-slope shape: Linear
Ecological site: R067AY150WY - Sandy (Sy)
Other vegetative classification: Droughty Loam (G067AY120NE)
Hydric soil rating: No

Rosebud

Percent of map unit: 5 percent
Landform: Hillslopes
Down-slope shape: Concave, convex
Across-slope shape: Linear
Ecological site: R067AY122WY - Loamy (Ly)
Other vegetative classification: Not Suited (G067AY000NE)
Hydric soil rating: No

Busher

Percent of map unit: 5 percent
Landform: Hillslopes
Down-slope shape: Convex, concave
Across-slope shape: Linear
Ecological site: R067AY150WY - Sandy (Sy)
Other vegetative classification: Not Suited (G067AY000NE)
Hydric soil rating: No