



Common Land Unit
 Non-Cropland
 Cropland
 Tract Boundary
 PLSS

Wetland Determination
● Restricted Use
▼ Limited Restrictions
■ Exempt from Wetland

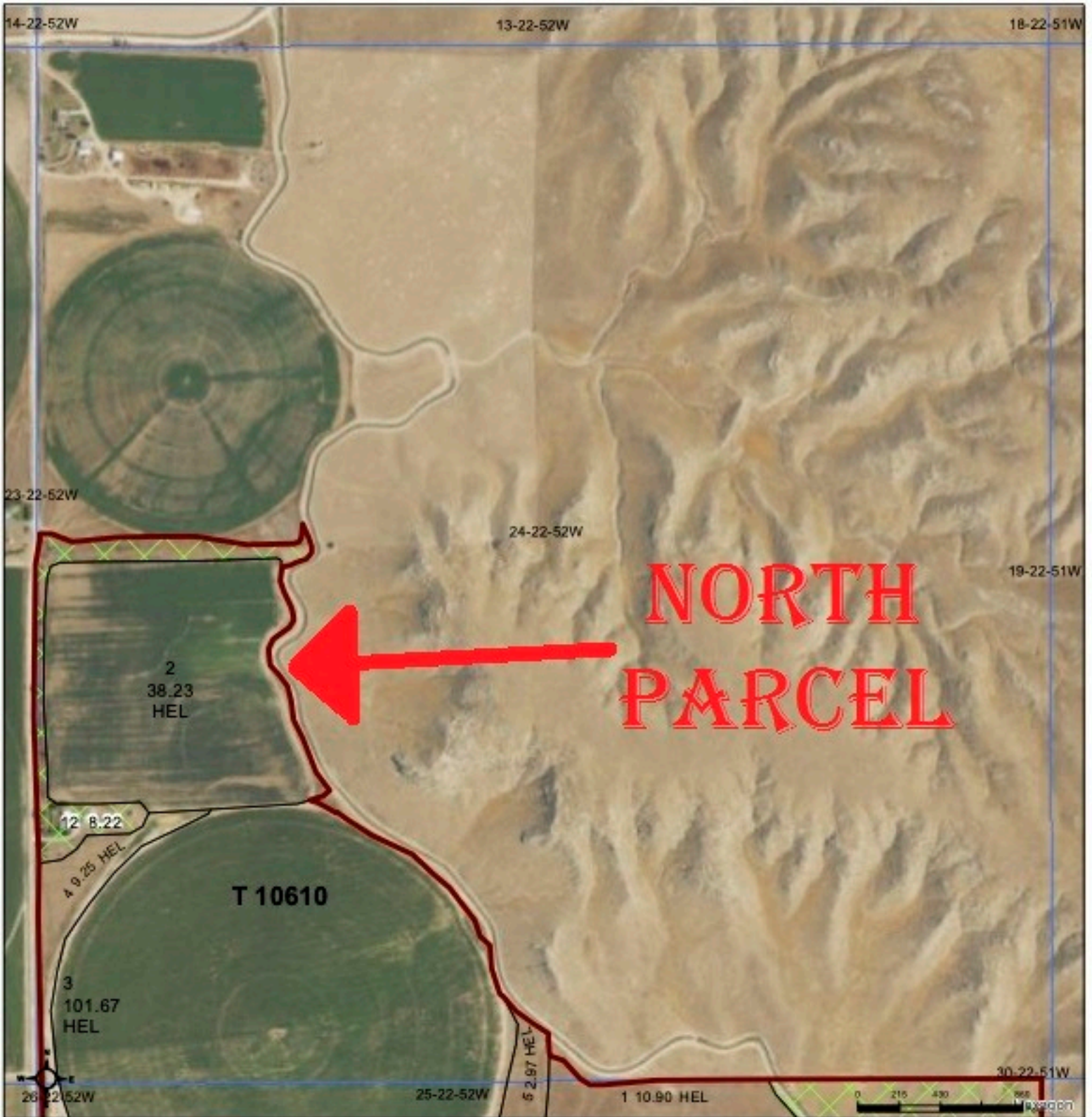
2024 EAWS Production Ortho Imagery
 Alternate year NAIP imagery may be displayed for tracts physically located in other states, along state borders, or years of partial imagery acquisition.

2025 Program Year
 Map Created February 18, 2025

Farm 3210

25-22-52W

United States Department of Agriculture (USDA) Farm Service Agency (FSA) maps are for FSA Program administration only. This map does not represent a legal survey or reflect actual ownership; rather it depicts the information provided directly from the producer and/or National Agricultural Imagery Program (NAIP) imagery. The producer accepts the data 'as is' and assumes all risks associated with its use. USDA-FSA assumes no responsibility for actual or consequential damage incurred as a result of any user's reliance on this data outside FSA Programs. Wetland identifiers do not represent the size, shape, or specific determination of the area. Refer to your original determination (CPA-026 and attached maps) for exact boundaries and determinations or contact USDA Natural Resources Conservation Service (NRCS).



Common Land Unit
 Non-Cropland
 Cropland
 Tract Boundary
 PLSS

Wetland Determination
● Restricted Use
▼ Limited Restrictions
■ Exempt from Wetland

2024 EAWS Production Ortho Imagery
 Alternate year NAIP imagery may be displayed for tracts physically located in other states, along state borders, or years of partial imagery acquisition.

2025 Program Year
 Map Created February 18, 2025

Farm 3210

24-22-52W

United States Department of Agriculture (USDA) Farm Service Agency (FSA) maps are for FSA Program administration only. This map does not represent a legal survey or reflect actual ownership; rather it depicts the information provided directly from the producer and/or National Agricultural Imagery Program (NAIP) imagery. The producer accepts the data 'as is' and assumes all risks associated with its use. USDA-FSA assumes no responsibility for actual or consequential damage incurred as a result of any user's reliance on this data outside FSA Programs. Wetland identifiers do not represent the size, shape, or specific determination of the area. Refer to your original determination (CPA-026 and attached maps) for exact boundaries and determinations or contact USDA Natural Resources Conservation Service (NRCS).